

## Han EMC 10 Hood Side Entry PG 16 Central

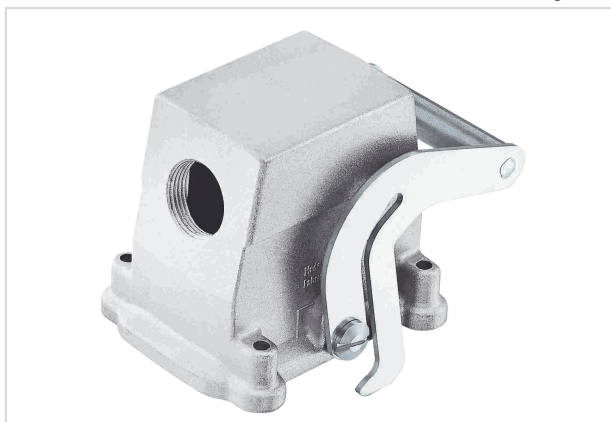


Image is for illustration purposes only. Please refer to product description.

Part number	09 62 010 0580
Specification	Han EMC 10 Hood Side Entry PG 16 Central
HARTING eCatalogue	<a href="https://b2b.harting.com/09620100580">https://b2b.harting.com/09620100580</a>

### Identification

Category	Hoods/Housings
Series of hoods/housings	Han <sup>®</sup> EMC
Type of hood/housing	Hood

### Version

Size	10 B
Version	Side entry
Cable entry	1x Pg 16
Locking type	Central locking lever (on the hood)
Field of application	Hoods/Housings for higher EMC requirements

### Technical characteristics

Limiting temperature	-40 ... +125 °C
Note on the limiting temperature	For use as a connector according to IEC 61984.
Degree of protection acc. to IEC 60529	IP65
Type rating acc. to UL 50 / UL 50E	4 12

### Material properties

Material (hood/housing)	Aluminium die-cast
Surface (hood/housing)	Uncoated
Colour (hood/housing)	Unpainted
Material (locking)	Stainless steel



Pushing Performance  
Since 1945

## Material properties

RoHS	compliant
ELV status	compliant
China RoHS	e
REACH Annex XVII substances	Not contained
REACH ANNEX XIV substances	Not contained
REACH SVHC substances	Not contained
California Proposition 65 substances	Yes
California Proposition 65 substances	Nickel

## Specifications and approvals

Approvals	DNV GL
UL / CSA	UL 1977 ECBT2.E235076 CSA-C22.2 No. 182.3 ECBT8.E235076
CE	Yes

## Commercial data

Packaging size	1
Net weight	371.25 g
Country of origin	Germany
European customs tariff number	85389099
GTIN	5713140073333
eCl@ss	27440202 Shell for industrial connectors